



CARE WORK & THE ECONOMY

Newsletter

July 2021

The Care Work and the Economy (CWE-GAM) is a project based at the American University Program on Gender Analysis in Economics (PGAE)

Follow us on Twitter



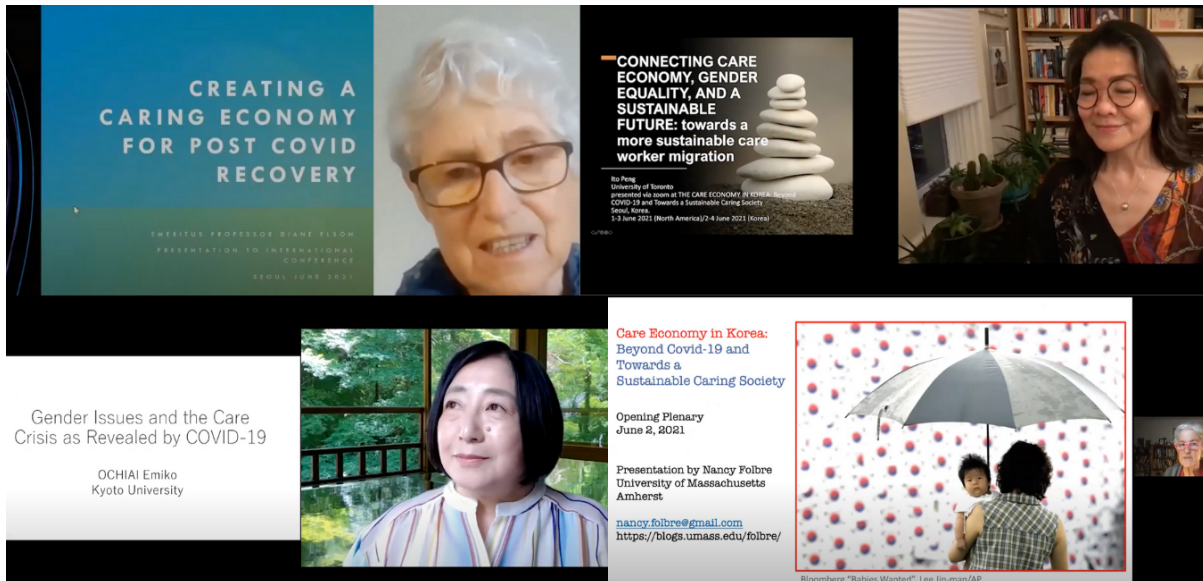
[@careworkeconomy](https://twitter.com/careworkeconomy)



CWE-GAM PROJECT UPDATES

2021 International Care Policy Conference on the Care Economy in Korea: Beyond Covid-19 and Towards a Sustainable Caring Society

The [Center for Transnational Migration and Social Inclusion \(CTMS\)](#) at Seoul National University and the Care Work and the Economy (CWE-GAM) Project at American University hosted international scholars, research institutions, civil society groups, and government ministries for a conference in Seoul, South Korea on June 2-4, 2021, with the purpose of examining how care work and care economy lie at the center of reimagining the transformation towards a new normal in the post-pandemic future. Among the keynote speakers and participants were Nobel Prize awardee Joseph Stiglitz, Professor Nancy Folbre, Asian Development Bank's Chief Economist Yasuyuki Sawada, World Bank Senior Director for Gender Caren Grown, and Professor Emerita Diane Elson.



Visit our Policy Dialogue webpage [here](#) to learn more about the conference, review our briefing on the sessions, and access policy briefs and narratives in South Korea.



Intensive Virtual Course on Gender-Sensitive Macroeconomic Modelling

This 3-week intensive course offered in partnership by the Care Work and the Economy (CWE-GAM) project at American University and the Levy Economics Institute at Bard College to develop and enhance the skills in estimating care economies and developing gender-sensitive macroeconomic models for policy

analysis. Seventy-one (71) participants from 22 countries are currently taking this course. Which is being held virtually June 28 - July 17, 2021. Visit our website [here](#) to learn more.

CWE-GAM Concluding Annual Meeting

Many thanks to all the participants and attendees of the 2021 Concluding Annual Meeting which brought together our community of scholars to take stock of the project's research and achievements, assess them against the project's goals, and discuss policy implications and lessons learned. Notably, program officers of Hewlett Foundation and the Open Society Foundation, the two major funders of the research project, spoke on the importance of the care agenda across the globe, emphasizing the relevance of the CWE-GAM research project, especially in the time of COVID-19. This event was held for two hours per day over the course of three days in order to accommodate our many scholars in different time zones. Visit our website [here](#) to watch the recordings, access presentation slides, read the Executive Summary and more.



FEATURED BLOGS

[“Girly Issues” Are Now the Country’s Issues](#)” Lucie Prewitt

[“Making Care Count”](#) Lucie Prewitt

[“Systemic Resilience and Carework: An Asia-Pacific Perspective”](#) Ito Peng

[“Biden’s American Jobs Plan Could Be Monumental for the Care Economy in the U.S.”](#) Jenn Brown

[“What is the Care Economy and Why Should We Care?”](#) Ito Peng

[“Women and the Pandemic in the U.S.”](#) Jenn Brown

[“Engendering the Macroeconomy: Current Efforts and Future Directions”](#) Jenn Brown

[“Macroeconomic Policies, Care and Gender in the Post-COVID Era: Part I”](#) Jenn Brown

[“Macroeconomic Policies, Care and Gender in the Post-COVID Era: Part II”](#) Jenn

Brown



CWE-GAM WORKING PAPERS & METHODOLOGY REPORTS

[CWE-GAM Methodology Report GEM-Care: A Gendered Dynamic General Equilibrium Model For Analysis of Care](#), Hans Lofgren & Martín Cicowiez

[Child And Elderly Care in South Korea: Policy Analysis With a Gendered, Care-Focused Computable General Equilibrium Model](#), Martín Cicowiez & Hans Lofgren

[Estimating The Unpaid Care Sector in South Korea](#), Joo Yeoun Suh



CWE-GAM POLICY BRIEFS

[Estimating The Unpaid Care Sector in South Korea](#), Joo Yeoun Suh & Hannah L. Randolph

[Estimating The Paid Care Sector in South Korea](#), Joo Yeoun Suh & Hannah L. Randolph

[Care Arrangement and Activities in South Korea: An Analysis of the 2018 Care Work Family Survey On Childcare and Eldercare](#), Eun-hye Kang
